



DEA No. RA0571996
FL License # CMTL-0003
CLIA No. 10D1094068

Certificate of Analysis

Compliance Test

Laurelcrest Labs
2800 Pringle Rd. SE
#160
Salem, OR 97302

Batch # BK-22-072
Batch Date: 2022-08-26
Extracted From: Industrial Hemp

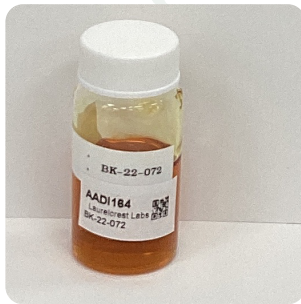
Sampling Method: MSP 7.3.1
Test Reg State: Florida

Production Facility: Laurelcrest Labs
Production Date: 2022-08-26

Order # LAU220826-040001
Order Date: 2022-08-26
Sample # AADI164

Sampling Date: 2022-08-29
Lab Batch Date: 2022-08-29
Completion Date: 2022-09-06

Initial Gross Weight: 28.834 g



Product Image

Potency Tested
 Heavy Metals Passed
 Mycotoxins Passed
 Pesticides Passed
 Residual Solvents Passed

Pathogenic Microbiology Passed
 Microbiology Petrifilm Passed

Potency 21 (LCUV)

Specimen Weight: 57.500 mg

Tested
SOP13.002 (LCUV)

Analyte	Dilution (1:n)	LOD (%)	LOQ (%)	Result (mg/g)	(%)
CBD	1000.000	5.40E-5	0.0015	843.7500	84.3750
CBT	10.000	2.00E-4	0.0015	17.5700	1.7570
CBC	10.000	1.80E-5	0.0015	13.9700	1.3970
CBN	10.000	1.40E-5	0.0015	9.0110	0.9011
CBDV	10.000	6.50E-5	0.0015	6.0270	0.6027
CBG	10.000	2.48E-4	0.0015	3.8550	0.3855
CBL	10.000	3.50E-5	0.0015	3.3000	0.3300
CBNA	10.000	9.50E-5	0.0015	1.0870	0.1087
CBGA	10.000	8.00E-5	0.0015	0.4720	0.0472
Delta-8 THC	10.000	4.00E-5	0.0015	0.2890	0.0289
CBCA	10.000	1.07E-4	0.0015	<LOQ	<LOQ
CBDA	10.000	1.00E-5	0.0015	<LOQ	<LOQ
CBDVA	10.000	1.40E-5	0.0015	<LOQ	<LOQ
Delta-8 THC	10.000	2.60E-5	0.0015	<LOQ	<LOQ
Delta-8 THC-O Acetate	10.000	2.70E-5	0.0003	<LOQ	<LOQ
Delta-9 THC	10.000	1.30E-5	0.0015	<LOQ	<LOQ
Delta-9 THC-O Acetate	10.000	7.70E-5	0.0003	<LOQ	<LOQ
Exo-THC	10.000	2.30E-4	0.0015	<LOQ	<LOQ
THCA	10.000	3.20E-5	0.0015	<LOQ	<LOQ
THCV	10.000	7.00E-6	0.0015	<LOQ	<LOQ
THCVA	10.000	4.70E-5	0.0015	<LOQ	<LOQ

Potency Summary

Total Active THC None Detected	Total Active CBD 84.375%
Total CBG 0.427%	Total CBN 0.996%
Other Cannabinoids 4.116%	Total Cannabinoids 89.914%

Xueli Gao
Xueli Gao
Lab Toxicologist
Ph.D., DABT

Aixia Sun
Aixia Sun
Lab Director/Principal Scientist
D.H.Sc., M.Sc., B.Sc., MT (AAB)



Definitions and Abbreviations used in this report: Total Active CBD = CBD + (CBD-A * 0.877), *Total CBDV = CBDV + (CBDVA * 0.87), Total Active THC = THCA-A * 0.877 + Delta 9 THC, Total THCV = THCV + (THCVA * 0.87), CBG Total = (CBGA * 0.877) + CBG, CBN Total = (CBNA * 0.877) + CBN, Total CBC = CBC + (CBCA * 0.877), Total THC-O-Acetate = Delta 8 THC-O-Acetate + Delta 9 THC-O-Acetate, Other Cannabinoids Total = Total Cannabinoids - All the listed cannabinoids on the summary section, Total Detected Cannabinoids = Delta8a10a-THC + Delta8-THC + Total CBN + CBT + Delta8-THCV + Total CBG + Total CBD + Total THCV + CBL + Total THC + Total CBC + Total CBDV + Delta10-THC + Total THC-O-Acetate, Analyte Details above show the Dry Weight Concentrations unless specified as 12% moisture concentration. (mg/ml) = Milligrams per Milliliter, LOQ = Limit of Quantitation, LOD = Limit of Detection, Dilution = Dilution Factor (ppb) = Parts per Billion, (%) = Percent, (cfu/g) = Colony Forming Unit per Gram (cfu/g) = Colony Forming Unit per Gram, LOD = Limit of Detection, (µg/g) = Microgram per Gram (ppm) = Parts per Million, (ppm) = (µg/g), (aw) = aw (area ratio) = Area Ratio, (mg/Kg) = Milligram per Kilogram, *Measurement of Uncertainty = +/- 10%

This report shall not be reproduced, without written approval, from ACS Laboratory. The results of this report relate only to the material or product analyzed. Test results are confidential unless explicitly waived otherwise. Accredited by a third-party accrediting body as a competent testing laboratory pursuant to ISO/IEC 17025 of the International Organization for Standardization.



DEA No. RA0571996
FL License # CMTL-0003
CLIA No. 10D1094068

Certificate of Analysis

Compliance Test

Laurelcrest Labs
2800 Pringle Rd. SE
#160
Salem, OR 97302

Batch # BK-22-072
Batch Date: 2022-08-26
Extracted From: Industrial Hemp

Sampling Method: MSP 7.3.1
Test Reg State: Florida

Production Facility: Laurelcrest Labs
Production Date: 2022-08-26

Order # LAU220826-040001
Order Date: 2022-08-26
Sample # AADI164

Sampling Date: 2022-08-29
Lab Batch Date: 2022-08-29
Completion Date: 2022-09-06

Initial Gross Weight: 28.834 g

Pesticides FL V4
Specimen Weight: 251.700 mg

Passed
SOP13.007
(LCMS/GCMS)

Pathogenic Microbiology - SE (MicroArray)

Passed
SOP13.019
(Micro Array)

Dilution Factor: 5.920

Analyte	LOD (ppb)	LOQ (ppb)	Action Level (ppb)	Result (ppb)	Analyte	LOD (ppb)	LOQ (ppb)	Action Level (ppb)	Result (ppb)
Abamectin	2.8800E-1	28.23	300	<LOQ	Fludioxonil	1.7400E+0	48	3000	<LOQ
Acephate	2.3000E-2	30	3000	<LOQ	Hexythiazox	4.9000E-2	30	2000	<LOQ
Acequinocyl	9.5640E+0	48	2000	<LOQ	Imazalil	2.4800E-1	30	100	<LOQ
Acetamiprid	5.2000E-2	30	3000	<LOQ	Imidacloprid	9.4000E-2	30	3000	<LOQ
Aldicarb	2.6000E-2	30	100	<LOQ	Kresoxim Methyl	4.2000E-2	30	1000	<LOQ
Azoxystrobin	8.1000E-2	10	3000	<LOQ	Malathion	8.2000E-2	30	2000	<LOQ
Bifenazate	1.4150E+0	30	3000	<LOQ	Metaxyl	8.1000E-2	10	3000	<LOQ
Bifenthrin	4.3000E-2	30	500	<LOQ	Methiocarb	3.2000E-2	30	100	<LOQ
Boscalid	5.5000E-2	10	3000	<LOQ	Methomyl	2.2000E-2	30	100	<LOQ
Captan	6.1200E+0	30	3000	<LOQ	methyl-Parathion	1.7100E+0	10	100	<LOQ
Carbaryl	2.2000E-2	10	500	<LOQ	Mevinphos	2.1500E+0	10	100	<LOQ
Carbofuran	3.4000E-2	10	100	<LOQ	Myclobutanil	1.0290E+0	30	3000	<LOQ
Chlorantraniliprole	3.3000E-2	10	3000	<LOQ	Naled	9.5000E-2	30	500	<LOQ
Chlordane	1.0000E+1	10	100	<LOQ	Oxamyl	2.5000E-2	30	500	<LOQ
Chlorfenapyr	3.4000E-2	30	100	<LOQ	Pacllobutrazol	6.5000E-2	30	100	<LOQ
Chlomequat Chloride	1.0800E-1	10	3000	<LOQ	Pentachloronitrobenzene	1.3200E+0	10	200	<LOQ
Chlorpyrifos	3.5000E-2	30	100	<LOQ	Permethrin	3.4300E-1	30	1000	<LOQ
Clofentezine	1.1900E-1	30	500	<LOQ	Phosmet	8.2000E-2	30	200	<LOQ
Coumaphos	3.7700E+0	48	100	<LOQ	Piperonylbutoxide	2.9000E-2	30	3000	<LOQ
Cyfluthrin	3.1100E+0	30	1000	<LOQ	Prallethrin	7.9800E-1	30	400	<LOQ
Cypermethrin	1.4490E+0	30	1000	<LOQ	Propiconazole	7.0000E-2	30	1000	<LOQ
Daminozide	8.8500E-1	30	100	<LOQ	Propoxur	4.6000E-2	30	100	<LOQ
Diazinon	4.4000E-2	30	200	<LOQ	Pyrethrins	2.3593E+1	30	1000	<LOQ
Dichlorvos	2.1820E+0	30	100	<LOQ	Pyridaben	3.2000E-2	30	3000	<LOQ
Dimethoate	2.1000E-2	30	100	<LOQ	Spinetoram	8.0000E-2	10	3000	<LOQ
Dimethomorph	5.8300E+0	48	3000	<LOQ	Spinosad	8.8000E-2	30	3000	<LOQ
Ethoprophos	3.6000E-1	30	100	<LOQ	Spiromesifen	2.6100E-1	30	3000	<LOQ
Etofenprox	1.1600E-1	30	100	<LOQ	Spirotetramat	8.9000E-2	30	3000	<LOQ
Etoxazole	9.5000E-2	30	1500	<LOQ	Spiroxamine	1.3100E-1	30	100	<LOQ
Fenhexamid	5.1000E-1	10	3000	<LOQ	Tebuconazole	6.7000E-2	30	1000	<LOQ
Fenoxycarb	1.0700E-1	30	100	<LOQ	Thiacloprid	6.4000E-2	30	100	<LOQ
Fenpyroximate	1.3800E-1	30	2000	<LOQ	Thiamethoxam	5.0000E-2	30	1000	<LOQ
Fipronil	1.0700E-1	30	100	<LOQ	Trifloxystrobin	3.7000E-2	30	3000	<LOQ
Fonicamid	5.1700E-1	30	2000	<LOQ					

Specimen Weight: 1028.900 mg

Dilution Factor: 1.000

Analyte	Result (cfu/g)	Analyte	Result (cfu/g)
Salmonella	Absence in 1g	STEC E. Coli	Absence in 1g

Microbiology (Petrifilm)
Specimen Weight: 998.700 mg

Dilution Factor: 1.000

Analyte	LOQ (cfu/g)	Action Level (cfu/g)	Result (cfu/g)	Analyte	LOQ (cfu/g)	Action Level (cfu/g)	Result (cfu/g)
Aerobic Bacteria	10	1000	<10	Yeast/Mold	10	100	<10

Xueli Gao Lab Toxicologist
Ph.D., DABT

Aixia Sun Lab Director/Principal Scientist
D.H.Sc., M.Sc., B.Sc., MT (AAB)



Definitions and Abbreviations used in this report: Total Active CBD = CBD + (CBD-A * 0.877), *Total CBDV = CBDV + (CBDVA * 0.87), Total Active THC = THCA-A * 0.877 + Delta 9 THC, Total THC = THC + (THCVA * 0.87), CBG Total = (CBGA * 0.877) + CBG, CBN Total = (CBNA * 0.877) + CBN, Total CBC = CBC + (CBCA * 0.877), Total THC-O-Acetate = Delta 8 THC-O-Acetate + Delta 9 THC-O-Acetate, Other Cannabinoids Total = Total Cannabinoids - All the listed cannabinoids on the summary section, Total Detected Cannabinoids = Delta 6a10a-THC + Delta 8-THC + Total CBN + CBT + Delta 8-THCV + Total CBG + Total CBD + Total THC + CBL + Total THC + Total CBC + Total CBDV + Delta 10-THC + Total THC-O-Acetate, Analyte Details above show the Dry Weight Concentrations unless specified as 12% moisture concentration. (mg/ml) = Milligrams per Milliliter, LOQ = Limit of Quantitation, LOD = Limit of Detection, Dilution = Dilution Factor (ppb) = Parts per Billion, (%) = Percent, (cfu/g) = Colony Forming Unit per Gram (cfu/g) = Colony Forming Unit per Gram, (µg/g) = Microgram per Gram (ppm) = Parts per Million, (ppm) = (µg/g), (aw) = aw (area ratio) = Area Ratio, (mg/Kg) = Milligram per Kilogram, *Measurement of Uncertainty = +/- 10%

This report shall not be reproduced, without written approval, from ACS Laboratory. The results of this report relate only to the material or product analyzed. Test results are confidential unless explicitly waived otherwise. Accredited by a third-party accrediting body as a competent testing laboratory pursuant to ISO/IEC 17025 of the International Organization for Standardization.



DEA No. RA0571996
FL License # CMTL-0003
CLIA No. 10D1094068

Certificate of Analysis

Compliance Test

Laurelcrest Labs
2800 Pringle Rd. SE
#160
Salem, OR 97302

Batch # BK-22-072
Batch Date: 2022-08-26
Extracted From: Industrial Hemp

Sampling Method: MSP 7.3.1
Test Reg State: Florida

Production Facility: Laurelcrest Labs
Production Date: 2022-08-26

Order # LAU220826-040001
Order Date: 2022-08-26
Sample # AADI164

Sampling Date: 2022-08-29
Lab Batch Date: 2022-08-29
Completion Date: 2022-09-06

Initial Gross Weight: 28.834 g

Residual Solvents - FL (CBD)

Passed
SOP13.039 (GCMS)

Specimen Weight: 317.800 mg

Dilution Factor: 500.000

Analyte	LOD (ppm)	LOQ (ppm)	Action Level (ppm)	Result (ppm)	Analyte	LOD (ppm)	LOQ (ppm)	Action Level (ppm)	Result (ppm)
1,1-Dichloroethene	0.0094	0.16	8	ND	Heptane	0.0013	1.39	5000	88.335
1,2-Dichloroethane	0.0003	0.04	5	ND	Hexane	0.068	1.17	290	ND
Acetone	0.015	2.08	5000	ND	Isopropyl alcohol	0.0048	1.39	500	ND
Acetonitrile	0.06	1.17	410	ND	Methanol	0.0005	0.69	3000	ND
Benzene	0.0002	0.02	2	ND	Methylene chloride	0.0029	2.43	600	ND
Butanes	0.4167	2.5	2000	ND	Pentane	0.037	2.08	5000	ND
Chloroform	0.0001	0.04	60	ND	Propane	0.031	5.83	2100	ND
Ethanol	0.0021	2.78	5000	ND	Toluene	0.0009	2.92	890	ND
Ethyl Acetate	0.0012	1.11	5000	ND	Total Xylenes	0.0001	2.92	2170	ND
Ethyl Ether	0.0049	1.39	5000	ND	Trichloroethylene	0.0014	0.49	80	ND
Ethylene Oxide	0.0038	0.1	5	ND					

Mycotoxins

Passed
SOP13.007 (LCMS)

Specimen Weight: 253.300 mg

Dilution Factor: 5.920

Analyte	LOD (ppb)	LOQ (ppb)	Action Level (ppb)	Result (ppb)	Analyte	LOD (ppb)	LOQ (ppb)	Action Level (ppb)	Result (ppb)
Aflatoxin B1	3.0400E-1	6	20	<LOQ	Aflatoxin G2	2.7100E-1	6	20	<LOQ
Aflatoxin B2	7.7000E-2	6	20	<LOQ	Ochratoxin A	7.5400E-1	12	20	<LOQ
Aflatoxin G1	3.0400E-1	6	20	<LOQ					

Heavy Metals

Passed
SOP13.048 (ICP-MS)

Specimen Weight: 251.490 mg

Dilution Factor: 198

Analyte	LOD (ppb)	LOQ (ppb)	Action Level (ppb)	Result (ppb)	Analyte	LOD (ppb)	LOQ (ppb)	Action Level (ppb)	Result (ppb)
Arsenic (As)	4.83	100	1500	<LOQ	Lead (Pb)	11.76	100	500	<LOQ
Cadmium (Cd)	.64	100	500	<LOQ	Mercury (Hg)	.58	100	3000	<LOQ

Xueli Gao
Xueli Gao Lab Toxicologist
Ph.D., DABT

Aixia Sun
Aixia Sun Lab Director/Principal Scientist
D.H.Sc., M.Sc., B.Sc., MT (AAB)



Definitions and Abbreviations used in this report: Total Active CBD = CBD + (CBD-A * 0.877), *Total CBDV = CBDV + (CBDVA * 0.87), Total Active THC = THCA-A * 0.877 + Delta 9 THC, Total THC = THC + (THCVA * 0.87), CBG Total = (CBGA * 0.877) + CBG, CBN Total = (CBNA * 0.877) + CBN, Total CBC = CBC + (CBCA * 0.877), Total THC-O-Acetate = Delta 8 THC-O-Acetate + Delta 9 THC-O-Acetate, Other Cannabinoids Total = Total Cannabinoids - All the listed cannabinoids on the summary section, Total Detected Cannabinoids = Delta6a10a-THC + Delta8-THC + Total CBN + CBT + Delta8-THCV + Total CBG + Total CBD + Total THC + CBL + Total THC + Total CBC + Total CBDV + Delta10-THC + Total THC-O-Acetate, Analyte Details above show the Dry Weight Concentrations unless specified as 12% moisture concentration. (mg/ml) = Milligrams per Milliliter, LOQ = Limit of Quantitation, LOD = Limit of Detection, Dilution = Dilution Factor (ppb) = Parts per Billion, (%) = Percent, (cfu/g) = Colony Forming Unit per Gram (cfu/g) = Colony Forming Unit per Gram, LOD = Limit of Detection, (µg/g) = Microgram per Gram (ppm) = Parts per Million, (ppm) = (µg/g), (aw) = aw (area ratio) = Area Ratio, (mg/Kg) = Milligram per Kilogram, *Measurement of Uncertainty = +/- 10%

This report shall not be reproduced, without written approval, from ACS Laboratory. The results of this report relate only to the material or product analyzed. Test results are confidential unless explicitly waived otherwise. Accredited by a third-party accrediting body as a competent testing laboratory pursuant to ISO/IEC 17025 of the International Organization for Standardization.